



Syntec Robot Controller



TRUSTED TECHNICAL SERVICE

Syntec Robot Controller

SYNTEC

CONTENT

About Syntec	／	01
Solution Introduction	／	03
Software Introduction	／	04
– Easy		
– Connected		
– Open		
Robot Application Package	／	09
Case Studies	／	11
Appendix	／	16

ABOUT SYNTEC

25+

25-Year Experience

1

All in 1 Service

50+

50+ Service Locations

NO.1

PCbaseNo.1

SYNTEC specializes in PC-based motion control through excellent research and development for 25 years.

Totally integrated automation

Supply automation, IOT, software and hardware solutions.

With 50+ service locations around the world

Made in Taiwan

Consistent production process

Company vision:

Trustworthy intelligent manufacturer partner

Company mission:

Comprehensive smart factory solution

Under the industry 4.0 global trend, the industrial sector no longer relies on traditional production methods. What replaced them are diverse, customization centered, and small quantity productions. LEANTEC is able to respond to global industrial changes in providing comprehensive solutions to clients, thereby realizing our vision of achieving smart manufacturing and creating smart factories.

In moving towards industry 4.0, LEANTEC uses its smart manufacture system integration as its core advantage in accumulating experience through small quantity & diverse productions, cyber physical system integration, on-site services, and complemented by multiple sales channels, in providing one-stop comprehensive solutions.

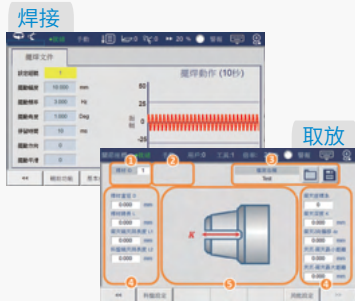


SOLUTION INTRODUCTION

Solution Introduction



SYNFACTORY Syntec Cloud



Industry Process Package



IO Solution / Peripheral Components



Servo Package



Open Servo



Commercially Available Motors

Features

- Multiple industry process packages that can be directly applied in practical applications.
- Standard configuration includes 16 inputs and 16 outputs, which can be expanded up to 128 inputs and 128 outputs using plug-in cards. It also supports ADDA, PWM, and MPG functionalities.
- Supports various communication protocols for easy integration with peripheral components.
- Can be connected to the Syntec Cloud via SMB.
- The electric control package solution provides a one-stop shopping experience, with seamless integration of servo systems for reduced wiring and plug-and-play functionality.
- Supports open servo communication, compatible with various commercially available drives.
- Supports encoders from Nikon, Tamagawa, and others, and can drive various commercially available motors, as well as Mitsubishi and Panasonic motors.
- Standard configuration of 4 axes, with support for up to 12 axes. Can be used with linear tracks and workstations for collaborative motion.

SOFTWARE INTRODUCTION

Friendly Use



Easy

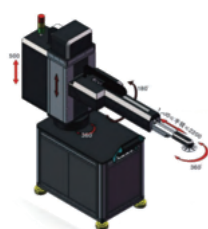
- Easy adjustment, installation, and operation.
- Pain-free integration with robots.
- Reduced setup and programming time.

Supports multiple types

- Supports over 20 different arm configurations
- Can be used by simply inputting the mechanism parameters



Palletizing Robot



Swing arm Robot



Six-Axis Robot



SCARA Robot



Parallel Robot

SOFTWARE INTRODUCTION

Intuitive Operation and Programming

- Conversational programming, no need to learn robot languages
- Supports simplified Pinyin input and multi-language switching



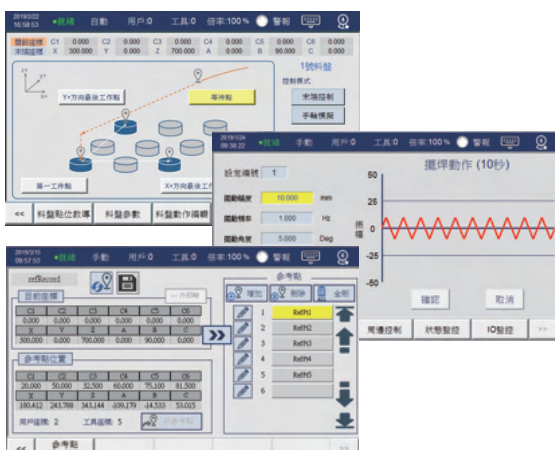
Sufficient IO commands

- Provide complete IO commands without writing any PLC on your own
- Wait for Input Point I without deceleration, and output Point O during movement, which can improve the operating efficiency of the machine



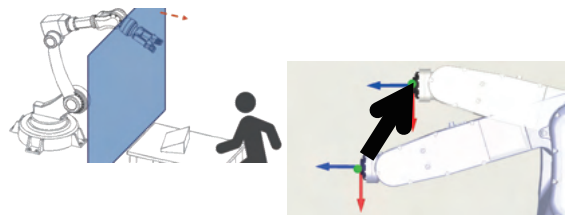
Quickly introduce it to practical applications

- Provide the batching tray and track tracking and workstation reservation functions
- Provide various process packages, such as welding, picking and placing, etc.
- Record important points according to reference points and reuse them in the program



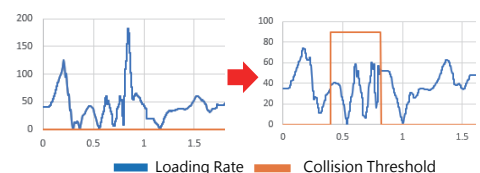
Easy advanced programming function

- The anti-collision area function can prevent the arm from entering a specific area to increase safety
- The dynamic anti-collision function can prevent the arm from colliding during movement
- Able to automatically pass the singularity without writing any bypassing program on your own

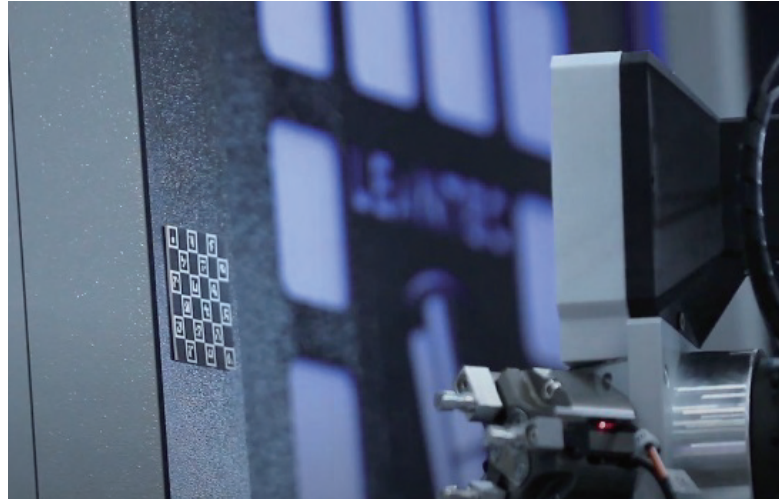


Disable Collision Detection

Enable Collision Detection



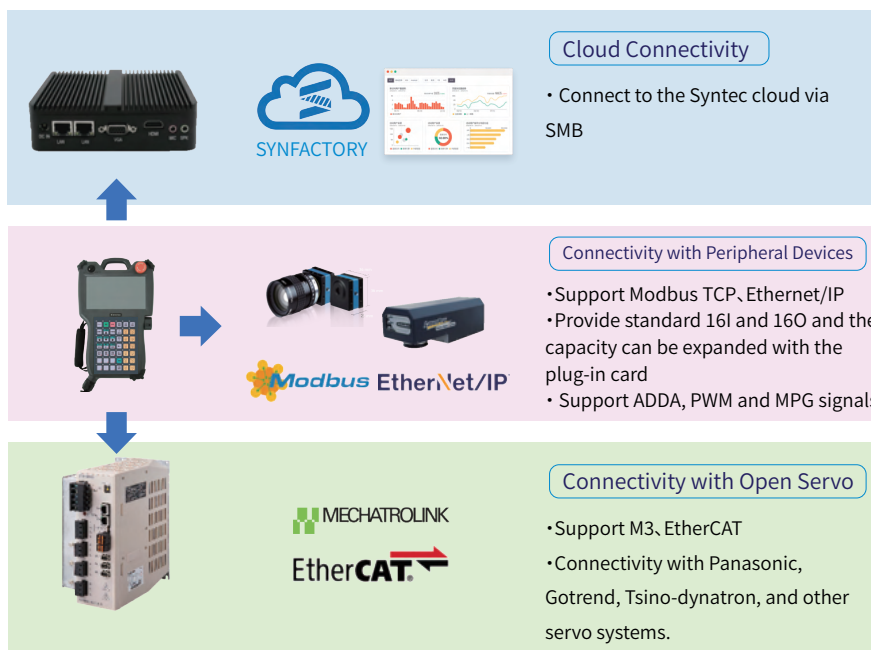
Connection



Connection

- Machine-to-Cloud, Machine-to-Machine, Machine-to-Drive communication
- Support for multiple standard communication protocols
- Enhance value-added applications in the peripheral ecosystem

Comprehensive Connectivity



Connect to the machine and PC



- NetPLC connects to the Syntec controller via Ethernet cable, enabling quick communication setup
- SMB connection allows linking with third-party CNC controllers
- NetDNC connects to a PC via Ethernet cable, facilitating large file processing

SOFTWARE INTRODUCTION

Open

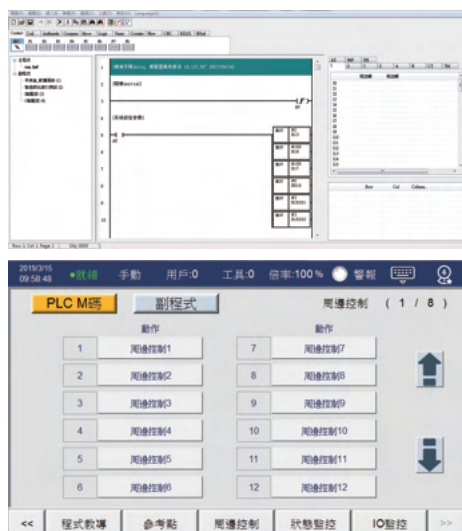


Open

- Highly customizable and flexible
- Packaging processes for different application scenarios
- Master industrial know-how

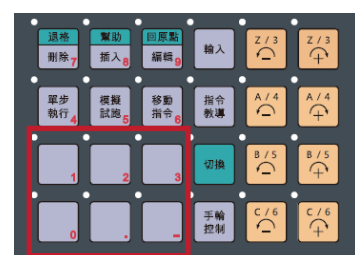
Common action flow of packaging

- Perform Syntec PLC programming with a special editor
- Provide PLC peripheral control and peripheral subprograms
- Quickly import peripheral equipment and common actions for packaging



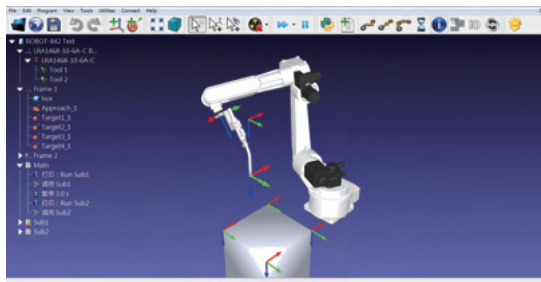
Design industrial operating habits

- Complete screen development through dragging and dropping of the eHMI tool
- The custom entity can expand button functions



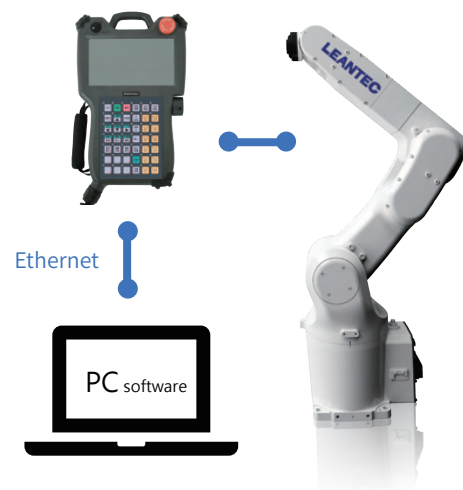
Off-line programming application solution

- Support offline programming and CAD/CAM software
- Provide arm models and the syntax post-processor



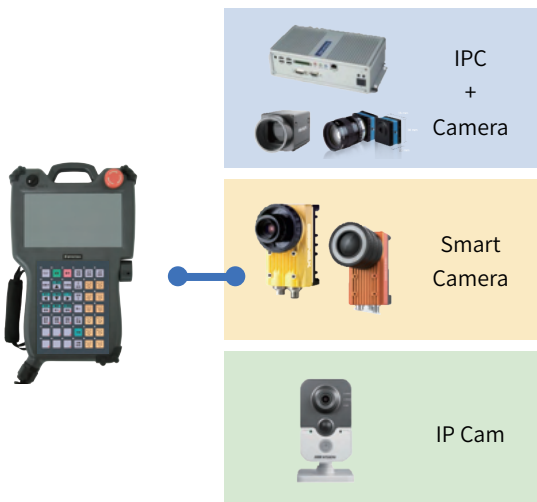
PC software application

- Connect to PC with the network cable and provide the RemoteAPI function
- Develop custom PC software upon the customer requirement to monitor and operate machines



Machine visual application

- Compatible with ImagingSource and Hikvision cameras
- Monitor the visual screen and adjust the visual parameters through the Teach Pendant.
- Provide visual solutions and produce tailored visual products according to requirements



Tool (TCP) calibration application

- The Leantec laser calibrator is optional for TCP calibration to improve the production accuracy
- Provide optional built-in solutions for software calibration to calibrate tools in an online or off-line manner



Industrial Process Package.

Welding process

Arc welding process

- Complete welding commands, including weaving welding and intermittent welding, to meet requirements on different processes.
- Files can be saved for the process to facilitate process calling and inheritance.



Laser welding process

- Standard special laser welding process package
- Support the time power and speed laser functions and precisely control the received optical power to prevent over-welding



Welding process-sensor

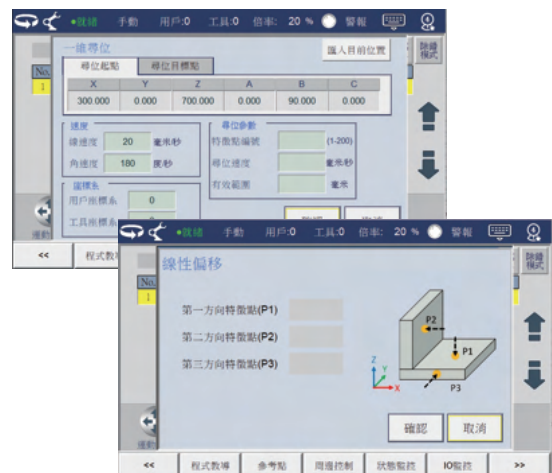
Sensor application - Laser positioning and tracking

- The laser positioning and tracking functions can solve the clamping error and thermal deformation of workpieces, which make the production more flexible
- The built-in tracker can perform hand-eye correction for easy adjustment



Sensor application - Contact positioning

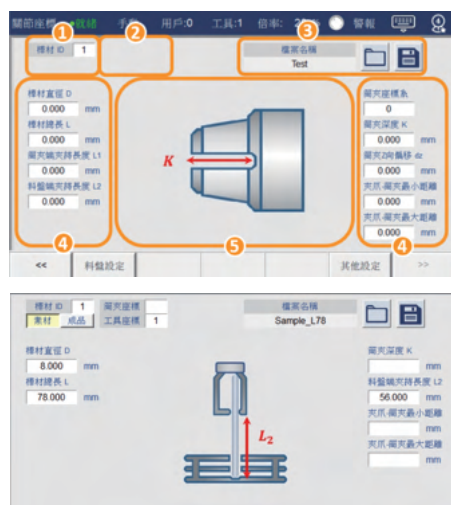
- The contact positioning function is used to solve the workpiece clamping error
- Automatically teach to find the target point and it is easy to make adjustment
- Provide several shift methods



Pick-and-place of the machine tool

Pick-and-place of the Tool Grinder

- Fast refueling parameter settings
- Parameter graphization makes operation more intuitive



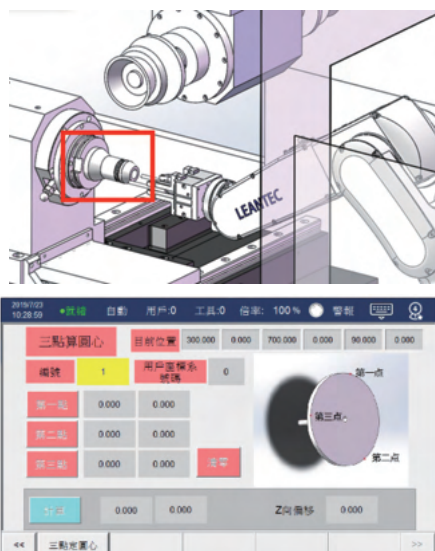
CNC quick connection

- The Network cable is connected after parameter settings
- The built-in program template enables the signal handshake to be completed at one time
- Integrate the current support and future support into the following: Support Syntec and cross-brand connection



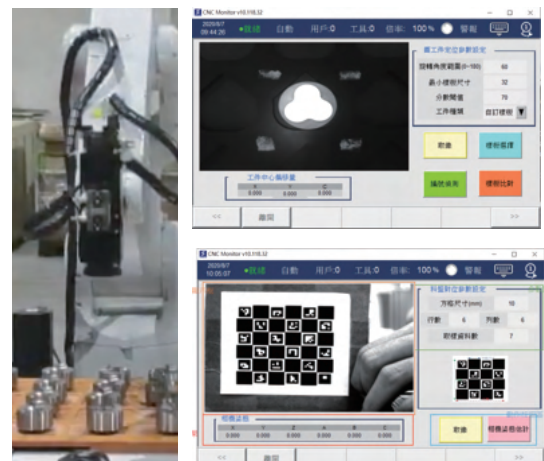
Alignment

- Quickly align the bar with the tray and the spindle direction
- Significantly reduce the time that the arm teaches points



2D visual alignment module

- The controller is integrated with the visual function and works with commercially available cameras
- Workpiece positioning, QR code recognition and machine tool/tray position calibration



CASE STUDIES

Case Studies 1

- Application case: Palletizing and packing
- Scenario description: Food industry production line automation solution
- Software function:
 - Provide the tray and singularity avoidance functions and the stack application can be quickly imported
 - Perform custom development according to different stack styles
 - Support the standard palletizing, heavy-duty palletizing robots and other structure robots



Style 1

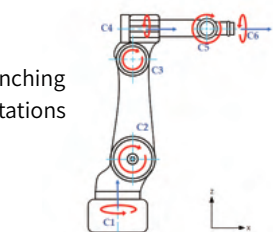


Style 2



Case Studies 2

- Application case: Wood plank punching
- Scenario description: Curved seat back panel punching solution
- Software function:
 - Able to pack special industrial functions, such as plane punching and curved surface punching
 - Provide the reservation function to improve the production efficiency of multiple workstations
 - Provide standard 6-joint and 4-joint robots and other standard structure robots



Case Studies 3

- Application case Spraying application
- Scenario description Spraying automation of the motor production line
- Software function

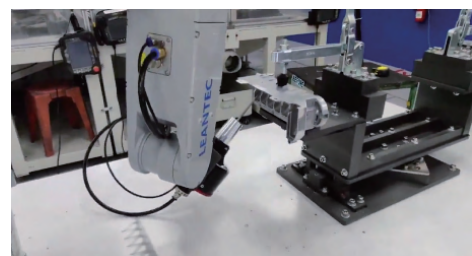
- Standard track tracking function, which can be used with vision and sensors
- Output from Point O during motion can improve the spraying efficiency
- Smooth corners can improve the uniformity of the spraying effect



Case Studies 4

- Application case Metal deburring
- Scenario description Automation solution of post-processing in metal forming.
- Software function

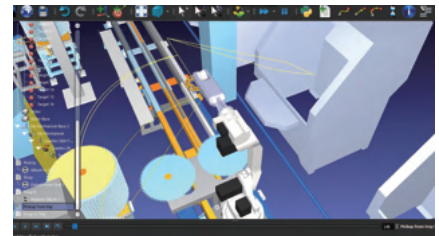
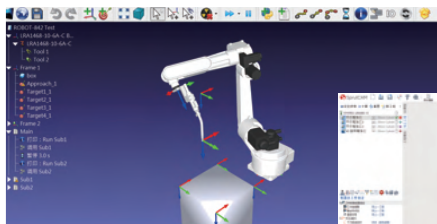
- Locate the external axis turntable with the serial PLC axis function
- Provide an accurate TCP position with the 4-point /6-point /20-point calibration function
- Smooth corners and independent acceleration and deceleration parameters can increase the efficiency and reduce jitter



CASE STUDIES

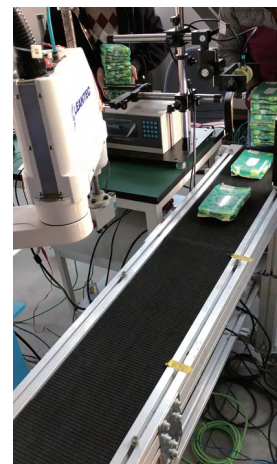
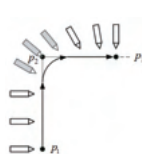
Case Studies 5

- **Application case** Offline programming software application
- **Scenario description** 3D simulated carved wooden Buddha statue picking and placing solution
- **Software function**
 - Support RoboDK, SprutCAM and other software
 - Provide robot models for offline programming and 3D motion simulation
 - Provide the syntax post-processor for Syntec robots and directly export the program for processing



Case Studies 6

- **Application case** SCARA and DELTA picking and placing application
- **Scenario description** Automatic production line introduction solution in the electronics industry and food industry
- **Software function**
 - Standard track tracking function, which can be used with vision and sensors
 - Smooth corners facilitate the realization of the high-speed pick-and-place function
 - Support SCARA, DELTA and other structure robots



Arc welding process package

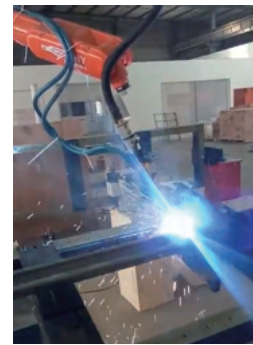
Case Studies 7

- [Application case](#) All-around welding of the multi-workstation and corner post
- [Scenario description](#)

The robot welding method is featured with the high production efficiency, and the clamping and installation of workpieces take time. The multi-workstation reservation function enables the workpiece to be clamped at one workstation and welded at other workstations, which can greatly improve the production efficiency.



3-workstation all-around welding



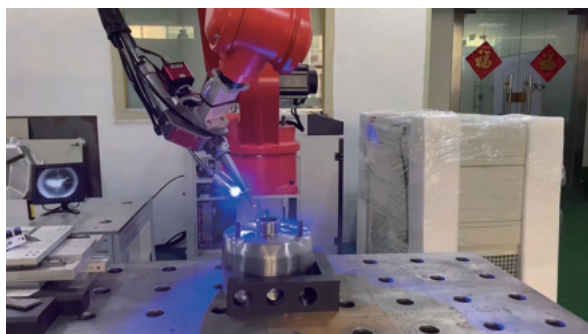
All-around welding of the corner post

Laser welding process package

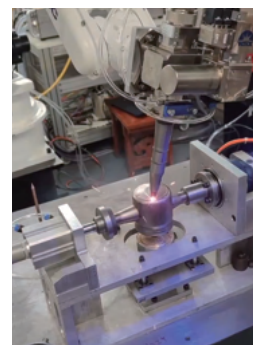
Case Studies 8

- [Application case](#) Water meter welding
- [Scenario description](#)

Because the requirement for welding effect of the workpiece is high, the laser welding process was used to meet the requirement on the low thermal deformation, and the all-around welding process was adopted with the collaborative function.



Laser welding example



Water meter

CASE STUDIES

Tool Grinder, One CNC - One Robot Integration

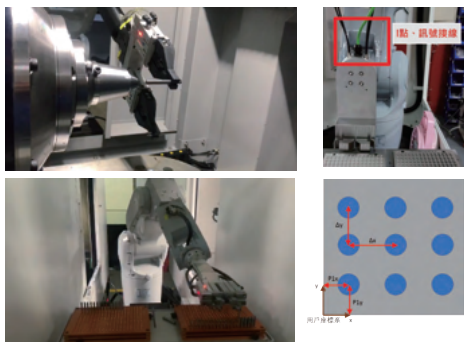
Case Studies 9

Pick-and-place process package for the Tool Grinder

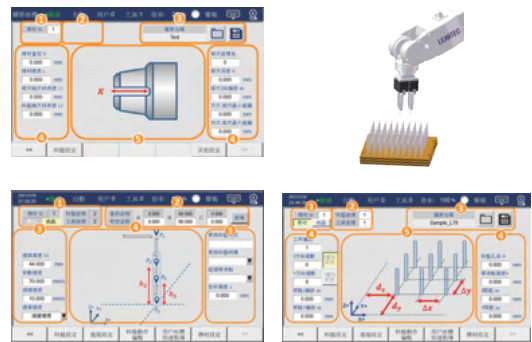
- Automatic centering of the collet and quick positioning of the tray
- Settings of parameters related to the picked and placed material (e.g. the tool length, blade, depth, clamping position, etc.)

[Highlights]

- It is not required to teach points if the workpiece dimensions change
- Graphical parameterization reduces learning costs



Tool Grinder, One CNC - One Robot Integration
Equipped with the pick-and-place process package for the sharpener



Pick-and-place process package for the tool grinder

Lathe, One CNC - One Robot Integration

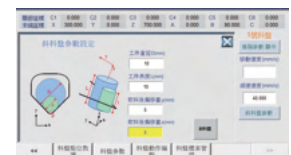
Case Studies 10

Quick setup, quick teaching and quick changeover

- CNC connection package and tray/spindle alignment function, tray shift function and tool calibration



CNC connection



Tray shift function



Tool calibration



Tool alignment

APPENDIX

Controller specifications <<



Item	Specification		
Material code	F21-81RA-X-10	F21-81RS-X-10	F21-81RD-X-10
Supported type	Articulated, Compound-Type	SCARA	DELTA
Displayed language	Traditional Chinese / Simplified Chinese (CHS) / English (E).		
Screen specifications	7-INCH RESISTIVE TOUCHSCREEN		
Operation method	Touchscreen, Button Operation		
Ram	4GB, Unlimited Number of Programs		
Servo communication	M3 Bus, EtherCAT Bus.		
Number of axes	Standard configuration of 4 axes (expandable up to 12 axes).		
IO points	16 inputs and outputs (expandable up to 128 inputs and outputs).		
External interface	USB*1		
Operation button	Operator Panel, Emergency Stop, Mode Selector Switch, Safety Switch, Handwheel		
Cable length	10 M / 17 M		
Protection level	IP65		
Ambient temperature	-10°C~50°C		
Environmental Humidity	20%-90%, No Condensation		
Physical Dimensions	340x207x78 mm		

Solution Introduction

Overview of highlights of the 81R-P Teach Pendant controller;

Mode knob

Intuitive mode switching
Comply with the habits of the industry

Embedded touch screen

Sensitive touch

Increase the number of buttons

Intuitive button organization
Easy to expand functions

Emergency stop position

Convenient for right-handed users
Comply with the habits of the industry

Standard MPG

Easy to operate JOG

Improved counterweight

The total weight and torque reduced
Easy to grasp it

Provide 4 foot pads

Put it on the table/against the wall stably

USB port position adjusted

Concealed appearance, oil and water resistance and improved protection

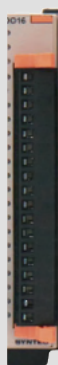


APPENDIX



Power module specifications <<

Item	Specifications
Material code	F31-FC-M3-PWR
LAN port	RJ45 type, 10/100 Mbps network communication port
M3 port	RJ45 TYPE, SERVO COMMUNICATION PORT
HHB port	15pin D-SUB port
IO points	Slot type, expandable
Support the expansion card	DI16/DO16 card, ADDA card and MPG card
Power input	DC24V, 1A
Installation method	Buckle
Ambient temperature	-10°C~50°C
Ambient humidity	20%-90% without condensation
Physical Dimensions	120X27X105MM



DO board specifications <<

Item	Specifications
Material code	F31-FC_16OUT_T16
Signal type	PNP type
Power input	DC24V, DC0V
Interface specifications	16-channel output signal with the output voltage of 24 V
Single point current	Maximum output current of 0.5 A
Installation method	Buckle
Ambient temperature	-10°C~50°C
Physical Dimensions	120x27x105mm



DI board specifications <<

Item	Specifications
Material code	F31-FC_16IN_PHO
Signal type	Choose one from NPN and PNP
COM port	DC24V:NPN , DC0V:PNP
Interface specifications	16-channel input signal, DC 24 V or 0 V
Installation method	Buckle
Ambient temperature	-10°C~50°C
Physical Dimensions	120x27x105mm

LWM board specifications <<



Item	Specifications
Model	F31-FC_LWM
Signal type	Choose one from NPN and PNP
P1	1PWM(24V) 1AD(-10V~10V, 12bits) 2DA (-10V~10V, 12bits)
P2	8-channel output signal with the output voltage of 24 V
P3	16-channel input signal, DC 24 V or 0 V (NPN/PNC can be adjusted)
Installation method	Buckle
Ambient temperature	-10°C~50
Ambient humidity	20-90% without condensation
Physical Dimensions	120x27x105mm

Specifications of the all-in-1 driver <<



Item	Specifications		
Material code	S08-SMD22B20-00	S08-SMD23B20-00	S08-SMD24B20-00
Number of axes	2	3	4
Power	1KW x2	1KW x3	1KW x4
Physical Dimensions	200X110X185MM		
Voltage	Single phase/three phase 220 V		
Driver protocol	Mechatrolink III		
Encoder type supported	Nikon, BissC, Tamagawa, FeeDat, EnDat		

Software Option << 81R (optional)

Number	Material code	Product name	Remarks
-	S20-OP_1AXIS_AUTO	Add 1 Axis_Automation	
16	S20-OP_VISION	Syntec Vision_OP16	
17	S20-OP_VISION2	Commercially Available Vision_OP17	
18	S20-OP_CAD_CAM	CAD/CAM FUNCTION_OP18	DXF-PATH FILE FUNCTION
22	S20-OP_FIVE-AXIS-ROBOT	5-joint Robot_OP22	4 and 5-joint robots are available
23	S20-OP_SIX-AXIS-ROBOT	6-joint Robot_OP23	4, 5 and 6-joint robots are available
55	S20-OP-ROBOT-ADVMotionCtrl	Advanced Robot Motion Control	Only 81RA/81RS is optional

Special machine code << 81R (optional)

Number	Material code	Product name
12	S20-MID_R_TENDING	Machine tool picking and placing of the robot
13	S20-MID_R_ARC_WELDING	Arc welding of the robot
14	S20-MID_R_LASER_WELDING	Laser welding of the robot

Choose Syntec to start a new era
Highly versatile, cost-effective, super scalable and diversified



TAIWAN

Taiwan (Hsinchu)

SYNTEC Technology Co., Ltd
ADD : No.25, Yanfa 2nd Rd., East Dist.,
Hsinchu City 300, Taiwan (R.O.C.)
TEL : +886-3-6663553
FAX : +886-3-6663505
EMAIL : sales@syntecclub.com.tw

Taichung

SUN-CNC Co., Ltd
ADD : No. 22, Lane 428, Section 1, Fengyuan
Boulevard, Fengyuan District
TEL : +886-4-25337731
TAX : +886-4-25349224

TANLU-CNC Co., Ltd
ADD : No. 42, Jingming Road, Xitun District,
Taichung City, Taiwan (R.O.C.)
TEL : +886-4-23102626
TAX : +886-4-23102636

Tainan

ADD : No. 218, Denan Road, Rende District,
Tainan City, Taiwan (R.O.C.)
TEL : +886-6-2796707
TAX : +886-6-2796705

CHINA

SYNTEC TECHNOLOGY(Suzhou)CO.,Ltd
ADD : Building B, No.9 Chunhui Road,Suzou Industrial
Park,China
TEL : 0512-69008860
FAX : 0512-65246029

**SYNTEC TECHNOLOGY(Suzhou)CO.,Ltd WuXi
Office**
ADD : B906, Yuye Network Building, 68 Exploration
Road, Huishan District, Wuxi City, Jiangsu Province,
China
TEL : 15295664580,

**SYNTEC TECHNOLOGY(Suzhou)CO.,Ltd
Changzhou Office**
ADD : Room 2217, Yatai Fortune Center, No. 1
Huayuan Street, Hutang Town, Wujin District,
Changzhou City, Jiangsu Province, China
TEL : 18168828572

**SYNTEC TECHNOLOGY(Suzhou)CO.,Ltd
Xuzhou Branch**
ADD : Room 1503, South of Territorial Sea Office
Building, No. 66, Kunpeng Road, Xuzhou Economic
Development Zone, Jiangsu Province, China
TEL : 13656201020

**SYNTEC TECHNOLOGY(Suzhou)CO.,Ltd
NanJingBranch**
ADD : Room 712, Research Building 1, Lianggang
Park, 117 Suyuan Avenue, Jiangning District, Nanjing
City, Jiangsu Province, China
TEL : 025-52717702
FAX : 025-52717710

**SYNTEC TECHNOLOGY(Suzhou)CO.,Ltd
NanTong Branch**
ADD : Room T3-1301, No. 108, Gangzha District,
North Street, Nantong City, Jiangsu Province, China
TEL : 0513-89077025
FAX : 0513-89072057

**SYNTEC TECHNOLOGY(Suzhou)CO.,Ltd
NanTong Branch Yanchen Office**
ADD : Room 401, building 13, phase 9, Zhongnan
Century City, Yandu District, Yancheng City, Jiangsu
Province
TEL : 18625235150

**SYNTEC TECHNOLOGY(Suzhou)CO.,Ltd XiAn
Branch**
ADD : Room 1, 1328, Building 4, Yicui Garden I
Duhui, No. 10, South Tangyan Road, Xi'an
High-tech Zone
TEL : 029-88287423

**SYNTEC TECHNOLOGY(Suzhou)CO.,Ltd BaoJi
Office**
ADD : Room 1702, Unit 3, Building 8, Dongling Xinshiji,
Binhe North Road, Jintai District, Baoji, Shaanxi
Province, China

AROUND THE WORLD

Malaysia

MYSYNTEC TECHNOLOGY SDN BHD
ADD : 16, Jalan Astana 1F, Bandar Bukit Raja, 41050
Klang, Selangor, Malaysia.
TEL : +603-33115887
EMAIL : sales.malaysia@syntecclub.com

Thailand

MYSYNTEC TECHNOLOGY SDN BHD
ADD : 3F, No. 36, A4 Street, Ward 12, Tan Binh District,
Ho Chi Minh City, Vietnam
TEL : +84-938332829
TEL : +662-006-5738

Vietnam

SYNTEC VIET NAM TECHNOLOGY CO., LTD
ADD : 3F, No. 36, A4 Street, Ward 12, Tan Binh District,
Ho Chi Minh City, Vietnam
TEL : +84-938332829
FAX : +84-2822535556
EMAIL : andyngo@vnsyntec.com.vn

India

SYNTEC TECHNOLOGY INDIA PVT.LTD
ADD : Champaka building, P-6C,2nd floor, peenya industrial
area Near peenya police station Bangalore-560058
TEL : +91-9916146577
E-mail : raghavendra.naik@syntecclub.com

Guangdong

**SYNTEC TECHNOLOGY(Suzhou)CO.,Ltd GuangDong
Branch**
ADD : Factory 201or 301, Building A, No.10 Nanjiang
Third Road, Zhujiang Street, Nansha District, Guangzhou
City
TEL : 020-39089367
FAX : 020-39089791

**SYNTEC TECHNOLOGY(Suzhou)CO.,Ltd DongGuan
Branch**
ADD : 0769-81661ing 1, Mobile Group, No. 522, Zhen
'an East Road, Chang 'an Town, Dongguan City,
Guangdong Province, China
TEL : 0769-81660318

**SYNTEC TECHNOLOGY(Suzhou)CO.,Ltd GuangZhou
Branch**
ADD : Room 404, Building 2, Seven Friendship Building,
No. 8 Luojiacun Section, Fuyi Road, Dalong Street,
Panyu District, Guangzhou City, Guangdong Province
TEL : 020-34583040
FAX : 020-34583220

**SYNTEC TECHNOLOGY(Suzhou)CO.,Ltd ChangPing
Branch**
ADD : Floor 5, Huilong Building, No. 8, Zhanqian 1st
Road, Banshi Village, Changping Town, Dongguan City,
Guangdong Province, China
TEL : 0769-82826802
FAX : 0769-82826820

**SYNTEC TECHNOLOGY(Suzhou)CO.,Ltd ShenZhen
Branch**
ADD : 406, Block E, Haowei new material industrial
park, No. 8, Qinglian 1st Road, Zhukeng community,
Longtian street, Pingshan District, Shenzhen,
Guangdong
TEL : 0755-84320380
FAX : 0755-84559490

**SYNTEC TECHNOLOGY(Suzhou)CO.,Ltd JiangMen
Branch**
ADD : Room 02, 7th Floor, Torch Building, Hi-Tech
Zone, 288 Jinou Road, Jianghai District, Jiangmen City,
Guangdong Province , China
TEL : 0750-3762143

Henan

**SYNTEC TECHNOLOGY(Suzhou)CO.,Ltd LuoYang
Branch**
ADD : Room 704, Runsheng Building, Intersection of
Heluo Road and Sanshan Road, Hi-tech Zone, Luoyang,
Henan Province, China
TEL : 0379-65110352
FAX : 0379-65110352

**SYNTEC TECHNOLOGY(Suzhou)CO.,Ltd
ShiJiaZhuang Office**
ADD : 4-3-801, Reyi Community, No. 8 Huaxing Road,
Qiaoxi District, ShiJiaZhuang City, Hebei Province, China
TEL : 18622728659
FAX : 0379-65110352

Turkey

SYNTEC TEKNOLOJİ LTD (Istanbul)
ADD : Kücükbakkalkoy Mah. Vedat Günyol Cd. Defne Sok.
No:1 D:1502 Flora Residence,34750 Atasehir/Istanbul, Türkiye
TEL : +90-216-2662475

USA

USA SYNTEC ECHNOLOGY, INC (South California)
ADD : 2841 Saturn St, #D, Brea, CA 92821
TEL : +1909-551-0187
EMAIL : info@syntecamerica.com

korea

AI SYNTECH (Service Partner)
ADD : 312Ho 103Dong 88, Simwon-ro, Yeongtong-gu, Suwon-si,
Gyeonggi-do, 16681, Rep. of KOREA
TEL : +82 70-8615-1134
EMAIL : thetechvt100@gmail.com

Fujian

**SYNTEC TECHNOLOGY(Suzhou)CO.,Ltd XiaMen
Branch**
ADD : Floor 3, No. 2, Jixiang West Road, Xinmin Town,
Tong'an District, Xiamen City, Fujian Provinc
TEL : 0592-7191901
FAX : 0592-7220536

Zhejiang

**SYNTEC TECHNOLOGY(Suzhou)CO.,Ltd HangZhou
Branch**
ADD : 1202, Unit 2, Building 1, Dikai Building, No.471
Jincheng Road, Xiaoshan District, Hangzhou City,
Zhejiang Province, China
TEL : 0571-82751187

**SYNTEC TECHNOLOGY(Suzhou)CO.,Ltd HangZhou
Branch Jinhua Office**
ADD : Room G204, No. 1729, Dongshi North Street,
Xinshi street, Wucheng District, Jinhua City, Zhejiang
Province
TEL : 1599-0026533

**SYNTEC TECHNOLOGY(Suzhou)CO.,Ltd WenZhou
Branch**
ADD : 1205-3, Honghai building, Ouhai District,
Wenzhou City, Zhejiang Province
TEL : 0577-86158619

**SYNTEC TECHNOLOGY(Suzhou)CO.,Ltd NingBo
Branch**
ADD : Room 1207, Ivy league Building, No.262, Lane
416, Zhaohui Road, Jiangdong District, Ningbo City,
Zhejiang Province, China
TEL : 0574-87750305

**SYNTEC TECHNOLOGY(Suzhou)CO.,Ltd WenLing
Branch**
ADD : Room 509, Haocheng Service Building, No. 838,
Wanchang Middle Road, Chengdong Street, Wenling
City, Taizhou City, Zhejiang Province, China
TEL : 0576-86138372
FAX : 0576-86119106

**SYNTEC TECHNOLOGY(Suzhou)CO.,Ltd YuHuan
Office**
ADD : Room 302, Unit 2, Building 1, Hualong Times
Square, 226 Provincial Road, Chunmen Town, Yuhuan
County, Taizhou City, Zhejiang Province, China
TEL : 13088836567

Chongqing

**SYNTEC TECHNOLOGY(Suzhou)CO.,Ltd ChongQing
Branch**
ADD : 1007, Building 4, No.62, East Section of Taishan
Avenue, Yubei District, Chongqing
TEL : 023-67913296
FAX : 023-67634382

**SYNTEC TECHNOLOGY(Suzhou)CO.,Ltd ChengDu
Office**
ADD : ADD : Room102, Unit 1, Building 24, Jiazhaoye
Modern City, No.898, Section 2, Xingxing Road,
Dongsheng Street, Shuangliu District, Chengdu City,
Sichuan Province, China
TEL : 18302866229

Tianjin

**SYNTEC TECHNOLOGY(Suzhou)CO.,Ltd TianJin
Branch**
ADD : No.37, Area A, Qiao Ruifeng Garden, No.7
Waihuan West Road, Xiqing District, Tianjin, China
TEL : 022-23739192

Shandong

**SYNTEC TECHNOLOGY(Suzhou)CO.,Ltd JiNan
Branch**
ADD : 502, Unit'3, Building 11, Luneng Kangqiao, No.
28, Sankongqiao Street, Tianqiao District, Jinan,
Shandong
TEL : 0531-85907208
FAX : 0531-85905708

**SYNTEC TECHNOLOGY(Suzhou)CO.,Ltd QingDao
Office**
ADD : Room 1004, Unit 2, Building 14, Jinri Zidu,
Tianshan Road, Chengyang District, Qingdao,
Shandong
TEL : 18663779803

**SYNTEC TECHNOLOGY(Suzhou)CO.,Ltd TengZhou
Office**
ADD : 13 households, row 1, Xiaokang village, Yucai
Road community, Beixin street, Tengzhou City,
Shandong Province
TEL : 15098706233

Hubei

**SYNTEC TECHNOLOGY(Suzhou)CO.,Ltd WuHan
Branch**
ADD : 2003-2006, Building A, Optics Valley
International, Jiayuan Road, No.456 East Luoyu Road,
Hongshan District, Wuhan City, Hubei Province, China
TEL : 027-87638876
FAX : 027-87204137

Liaoning

**SYNTEC TECHNOLOGY(Suzhou)CO.,Ltd ShenYang
Branch**
ADD : Room 1212, Tianxin Building, 17 Jianshe West
Road, Tiexi District, Shenyang City, Liaoning Province,
China, China
TEL : 18698806526

Anhui

**SYNTEC TECHNOLOGY(Suzhou)CO.,Ltd ShenYang
Branch**
ADD : Room 1005, block B, Wanda Ginza, rongchuang
Mao, Binhu, Hefei, Anhui Province,China.
TEL : 0551-63814183
FAX : 0551-63814183

LEANTEC Intelligence CO., LTD.

No.25, Yanfa 2nd Rd., East Dist.,
Hsinchu City 300, Taiwan

☎ 886-3-6663553

☎ 886-3-6663505

✉ sales@syntecclub.com.tw

2F., No.2, Jingke 3rd Rd.,
Nantun Dist.,Taichung City 408

☎ 886-4-23550621

☎ 886-4-23550621

✉ sales@leantec.com.tw

Suzhou LEANTEC Intelligence Co., Ltd.

Building B, No.9 Chunhui Road,Suzou
Industrial Park,China

☎ 86-512-69008860

☎ 86-512-65246029

✉ service@syntecclub.com.cn



<https://www.leantec.com.tw/default.aspx>

Specifications and external appearance are subject to change without notice.

Copyright © 2024 LEATEC Inc. All rights reserved
Catalog Number : 202401-V1